



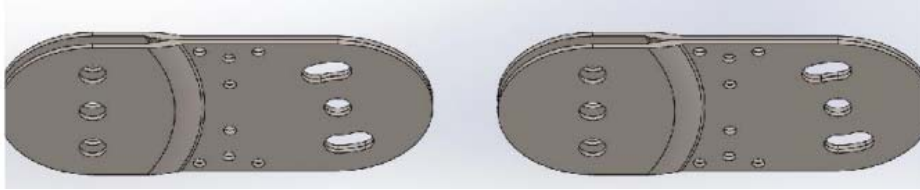
## 1. PLASTIC CHAIN ASSEMBLY AND DISASSEMBLY



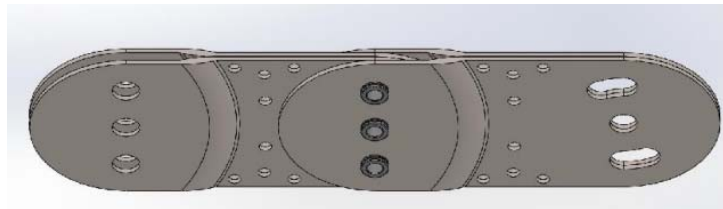
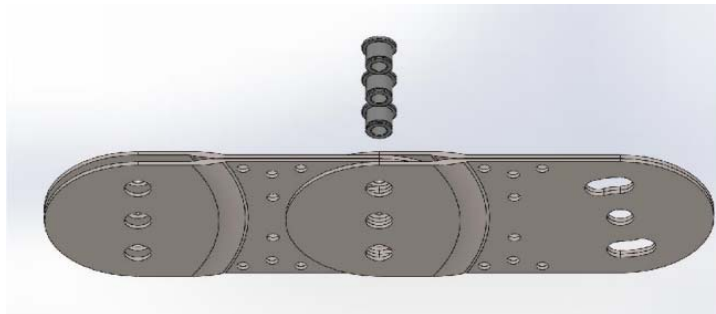


## 2. ASSEMBLY AND DISASSEMBLY OF THE METALLIC CHAIN

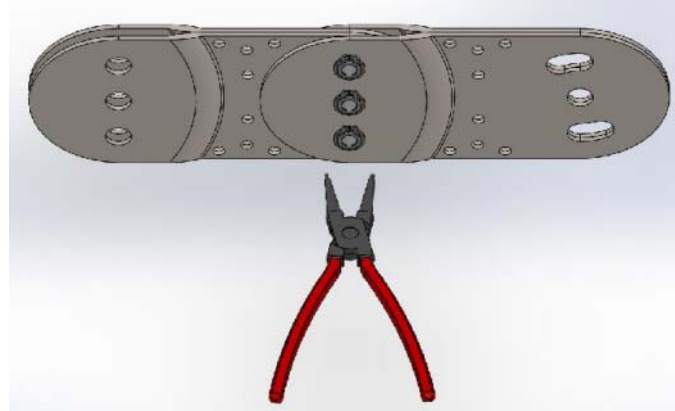
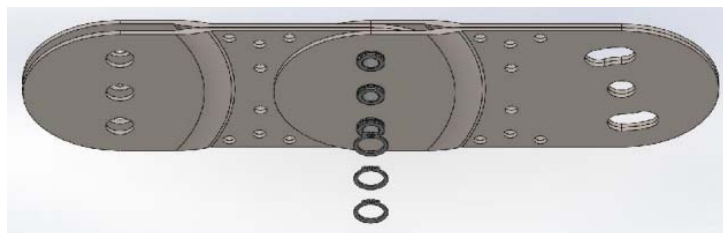
### 2.1. Use oil for chain assembly



Insert the axes

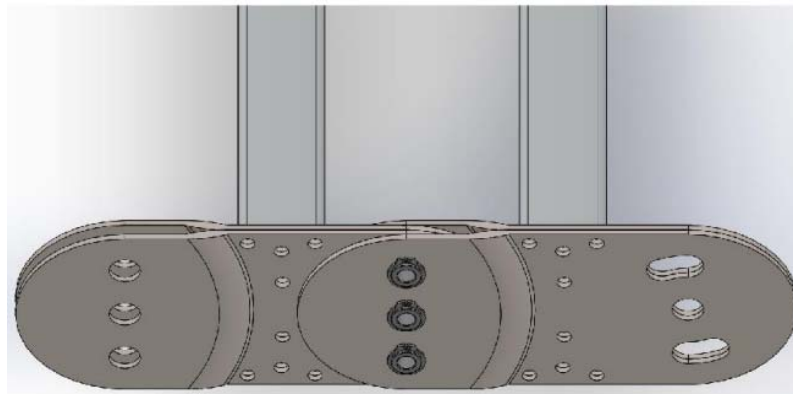
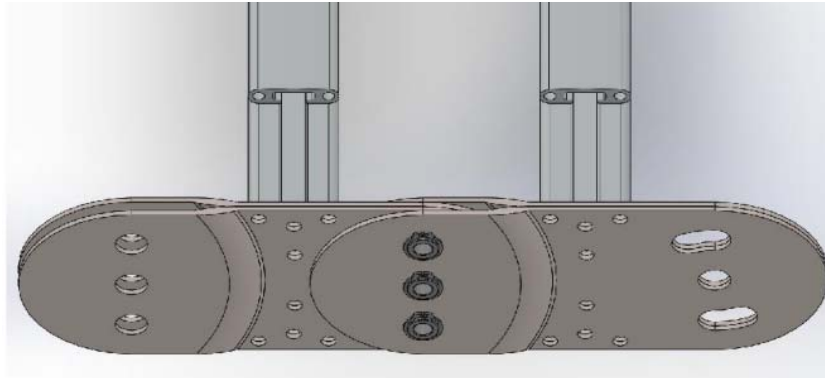


Assemble the retaining washers for the shafts

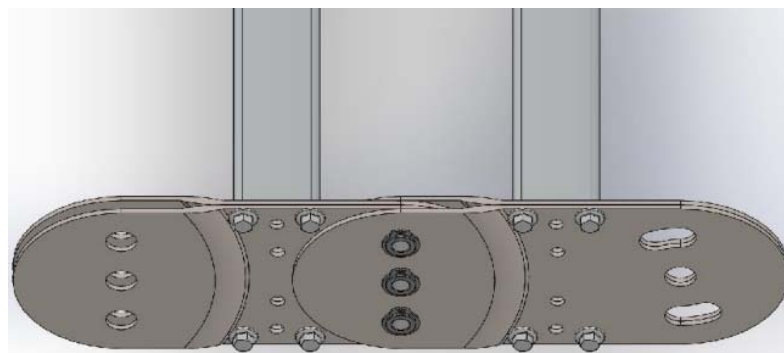
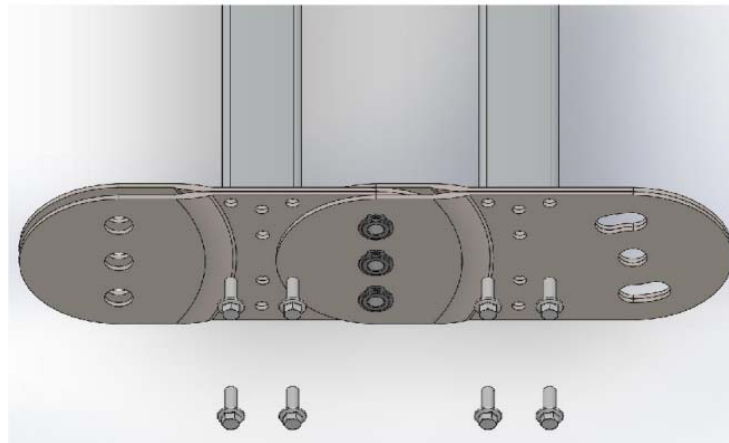




2.2. Use the frames for assembling the chain



2.3. Fix the frames to the chain using M-6 screws





2.4. Assemble two parts using a new shaft and retaining washers

